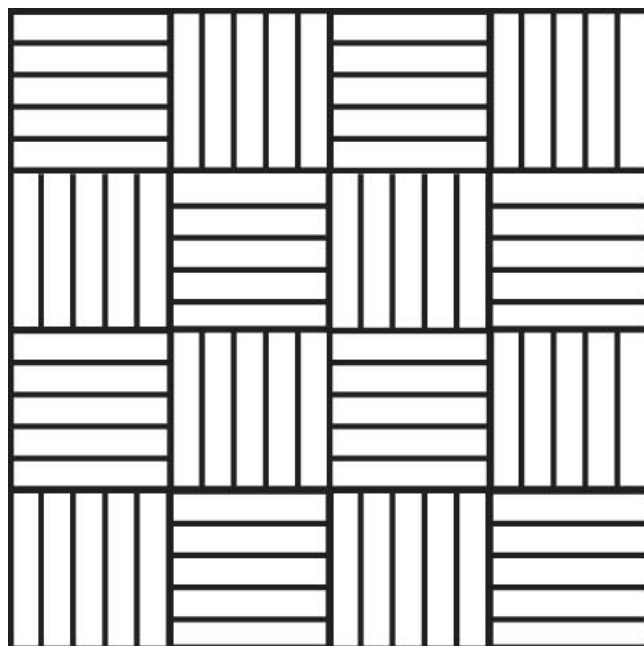
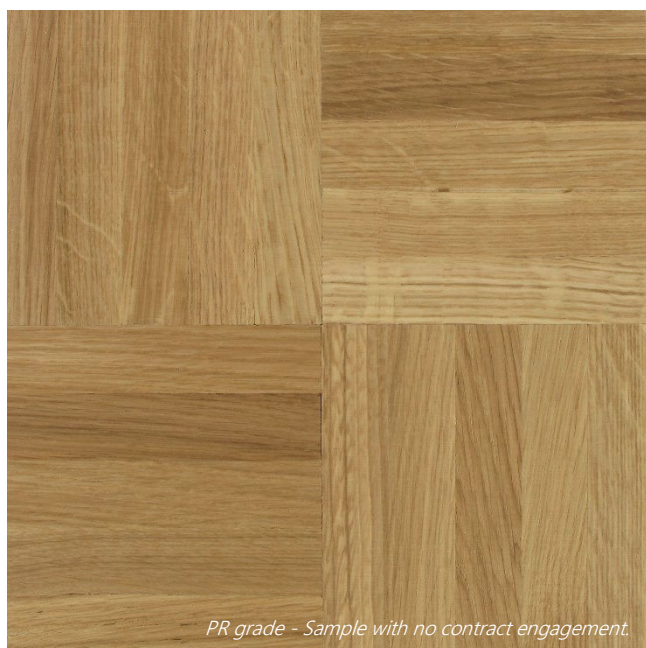
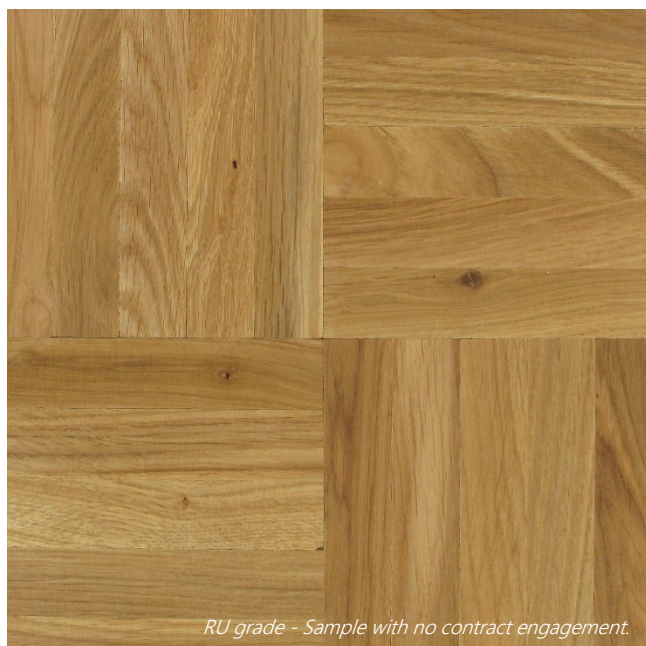


Mosaic

Oak in strips

MOSAIC RANGE



DESIGN PARQUET

654 rue du Chalonge, P.A. du Haut-Montigné / 35370 Torcé / FRANCE
Tél. +33 (0)2 99 49 66 66 / Fax +33 (0)2 99 49 66 67
E-mail France : commercial@designparquet.fr
E-mail Export : export@designparquet.fr

www.designparquet.com

Previous data sheet are invalid. Errors or technical informations can be changes without notice.
Updated in : January 2026.

DATA SHEET - MOSAIC

CHARACTERISTICS

Species (origin) : Oak (Europe).

Other species on request.

Grade : PR=PRIME - RU=RUSTIC - ST=STANDARD

Grade PR : Small knots up to 10 mm, sapwoodless, slight colour variations.

Grade RU : Without sapwood. Knots up to 25 mm with no limit on number. Discoloration allowed.

Grade ST : Natural oak without grade sorting.

Support : Solid.

Density : 650 kg/m³.

Type : Mosaic (Oak in strips).

Finishing : Unfinished (filling necessary during the process of installation).

| SUPPORT | THICKNESS (MM) | SIZE (MM) | TYPE | BEVELS | THERMAL RESISTANCE K/W |
|---------|----------------|------------|--------|--------|------------------------|
| SOLID | 8 | 480 x 480* | Mosaic | NO | 0,03 m ² |

** assembly (strips of 120 x 24 mm) with a thermoplastic net.*

TYPE OF INSTALLATION

- Glued according to NF DTU 51-2.

The mosaics must be glued on their side covered with a thermoplastic net.

COMPATIBILITIES

Compatible on low temperature hydraulic underfloor heating and cooling (according size) :

| COMPATIBILITIES | | | GLUED LAYING | |
|-----------------|----------------|--------|--------------------|----------------------------|
| SUPPORT | THICKNESS (MM) | TYPE | HEATING UNDERFLOOR | HEATING/COOLING UNDERFLOOR |
| SOLID | 8 | Mosaic | YES | YES |

It is imperative to start the heating 4 weeks before the beginning of the laying.

Heater off 48 hours before laying. Wait for 1 week and restart the heating gradually over 15-20 days. It is traditionally recommended a thermal resistance less than or equal to 0.09 m².K/W.

For higher thermal resistances, a certain loss of capacity must therefore be considered.

It is imperative to respect the laying rules and the manufacturer's recommendations for use, as well as the governing regulations :

- NF DTU 35.14 – Execution of hot water floors.
- The CSTB 3164 booklet – Reversible floors.

Suitable with ISO dB and Iso alu (Cf data sheet).

MAINTENANCE FLOOR

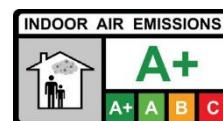
After finish :

- Remember to put protective pads under the legs of chairs and furniture.
- Carry out regular maintenance with a vacuum cleaner, broom, woollen cloth.
- Never wash your floor with large amounts of water.
- Do not use aggressive, abrasive, silicone or ammonia detergents.
- For persistent stains, remove with a damp sponge and neutral detergent.

INFORMATIONS

- Air humidity at the time of laying and throughout the life of the product must be between 40% and 60%.
- Fire classification :
 - Cfl-s1 (Solid)
- Hardness rank : C.
- Oak Monnin hardness : 4,2.

VOC EMISSIONS



*Information on the level of volatile compounds emission in inside air, that present a toxicity risk by inhalation, on a scale from A+ (very low emissions) to C (high emissions).

RANKING USE

The classification of parquet flooring is based on the class of use. The UPEC* classification does not apply to parquet flooring insofar as it can be renovated, but an equivalence can be made :

| SUPPORT | THICKNESS (MM) | RANK | UPEC EQUIVALENCE |
|---------|----------------|------|------------------|
| SOLID | 8 | | U3s P3 E1 C0 |

** Wear, punching, water, chemistry.*